

THE ROMANTIC

smile 😊 makers

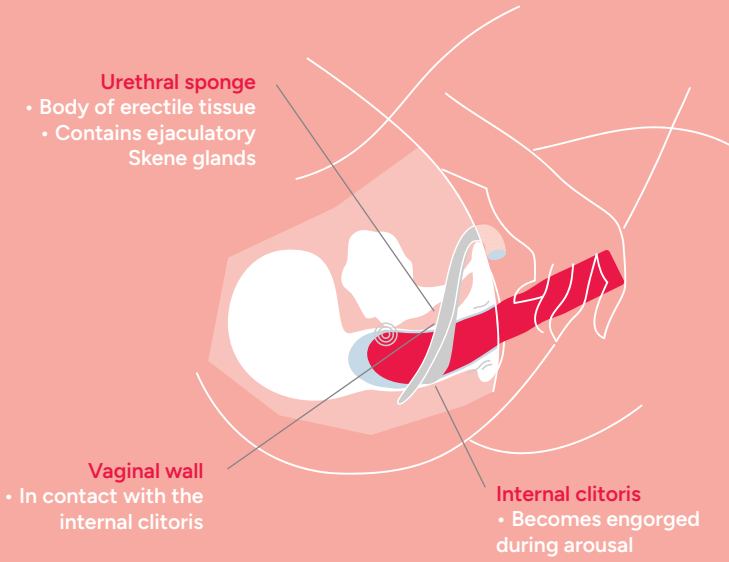
For A Moment Of Self-Romance

The Romantic is an invitation to celebrate your body and love yourself deeply and unapologetically.

It is designed with your pleasure anatomy in mind. Every dimension and every angle has been optimized using the latest research on the vagina's pleasure anatomy.

For a passionate experience with yourself, read on...

A Close Embrace



Seducing Yourself



Sensual Teasing
Use the rounded head of The Romantic to explore the sensitivity of your vulva. Start with the slowest speeds to build up expectation.



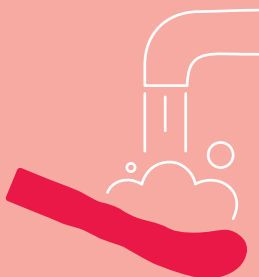
Shallow Yet Meaningful
The lower vagina contains a lot of nerve endings. To tease it, gently push the head of The Romantic only a few inches up, stay in and increase the speed.



Deep Connection
Slowly insert The Romantic in the deeper vagina and apply a light, sustained massage on the area. Avoid thrusting movements in the deeper vagina. Use a lubricant.

Vibrator Hygiene

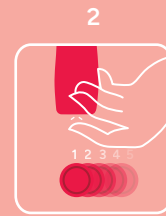
Always clean The Romantic thoroughly before and after each use. Wash with lukewarm water and pat dry with a lint-free cloth or towel.



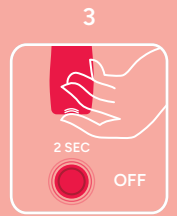
First Sight



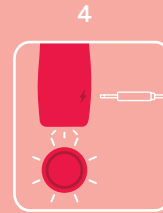
To turn it on, click the end button



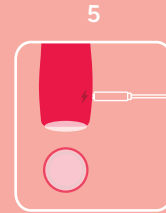
Click again to navigate between the 5 speeds and 4 pulsation modes



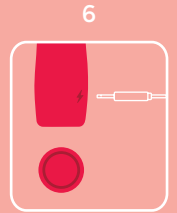
To turn off, press and hold the button. To turn on/off the travel lock, press again for 4s



Light blinking = Low battery



Charging



Fully charged

Different Kinds Of Romance

5 speeds



4 pulsation modes



G-Love
With the rounded head facing towards the front wall of the vagina, look for and massage your G-area, an internal erogenous zone highly sensitive for some.

More tips here
QR code



Set The Mood

For an immersive experience with The Romantic, tune into our collection of audio erotica.

